



27 March 2026

# NAENAE COLLEGE

He moana  
pukepuke e  
ekengia e te waka

A choppy sea can be  
navigated by a waka

Kia ora e te whānau

Wow! The end of Term 1 is fast approaching. This term has flown by. With only nine weeks and so much happening within the kura we have been constantly on the go. The academic conferences have just concluded and I hope you found them helpful in connecting with your son/daughter's Learning Advisor Roopu (LAR) teacher. The focus for these conversations was on relationships and gaining a shared understanding of how they are tracking. I hope that over the coming months you will feel comfortable contacting the LAR teacher as a first point of contact for any questions or concerns.

In Term 2, we focus on our classwork with assessments and NCEA work due. There is also a celebration of culture with Language Week celebrations, Multicultural Day, and our Kapa Haka and Poly Club performing at HuttFest. There is also a switch to winter sports. A reminder, with all that will occur, time management and good organisation are important skills to teach our young people. We will run Homework Club twice a week so students who need extra tuition or time to complete work should take advantage of this valuable resource.

The safety of our students is important to us. When it comes to preparation for emergencies, safety during activities, digital and online safety, and privacy, we do a number of things to ensure all students are kept safe and that we maintain good communication with you. Very soon we will send out an important survey using the 'Schoolbridge' app so please ensure this is downloaded onto your phone. We will ask for details about:

1. Your consent to take students off-site for low-risk Education Outside The Classroom (EOTC) activities. Even if you have provided this in the past, please **DO SO AGAIN** so all our paperwork is up to date.
2. Asking you, in case of an emergency, whether you wish students to remain at school until you pick them up or can they make their own way home.
3. Given the ever-increasing impact of AI, we need to update our cybersecurity consent. Even if you have provided this for us in the past, please **DO SO AGAIN**.
4. Regarding using images of students, we require permission to do so. We will be asking for you to say 'NO' if you do not want us to use students images in any publications or on social media.

## Save these dates!

- Thursday 2 April: End of Term 1
- Monday 20 April: Start of Term 2
- Monday 27 April: ANZAC Day Observed, School Closed
- Friday 1 May: May Music Month starts
- Thursday 7 May: Pasifika NCEA Evening
- Thursday 14 May: Whānau NCEA Evening
- Thursday 21 and Friday 22 May: CAA exams
- Monday 1 June: King's Birthday, School Closed
- Tuesday 2 June: Teacher Only Day.



As part of a regular review cycle, we are looking into what content our Physical Education and Health department teach to our Year 9 and Year 10 students for healthy relationships and sexuality education. In Term 2, as part of the health curriculum, we will be covering various topics in class. A letter with more detail will soon go out to parents/caregivers. After carefully considering the topics covered you can request that your student not take part in these classes and instead undertake an alternative learning program. In Term 3, after completing the programme, we will survey students and caregivers about the content covered to see what, if anything, should be added or removed. Please rest assured that the teaching of this subject area will be done in a respectful and non-judgmental manner. We think it's important for students to have all the facts to make healthy informed decisions.

**Chris Taylor, Principal**



At Naenae College, we have a number of senior students who coach our junior sports team, which means that over 160 junior students are benefiting from their rangatiratanga. We are immensely grateful to Grant and Ariella from Anchor NZ for their funding for our senior coaches. Their sponsorship for our school will make a great difference in our senior coaches being able to attend national tournaments, including volleyball, touch, basketball, and netball. Thank you, Anchor NZ and Waddell NZ !

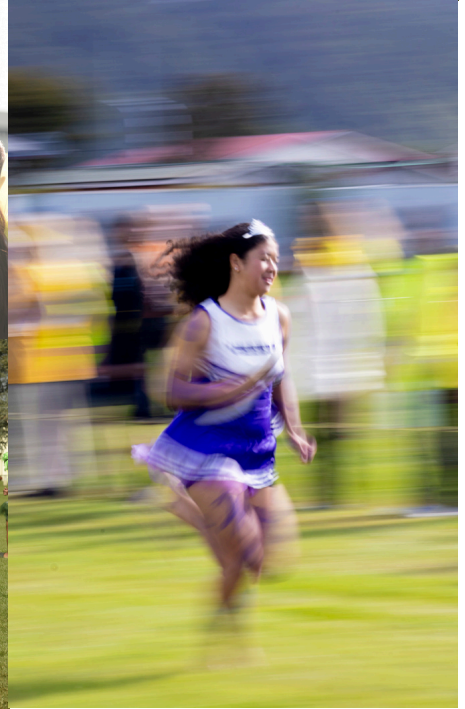


Well done to our kilikiti teams, who competed at last week's tournament. Both our boys' and girls' teams came third!

A big thank you to the staff and aiga involved, especially to Krystal and Tumua, who supported our teams through training and preparing for the day.



# TABLOID SPORTS DAY



## Student vehicles on site at our kura

- Only those who have completed a form on SchoolBridge may park on school grounds
- You will be issued a laminated vehicle pass which needs to be shown - these will be checked
- Only those with correct licences will be issued a vehicle pass
- Students must not drive more than 10km per hour while on school grounds
- No hanging out in cars during school hours, including break times
- No leaving school grounds in vehicle during the school day
- Unauthorised vehicles run the risk of being clamped or towed.

# NMC CANTEEN

## MENU

### FOOD

Chicken burgers	\$5.50
Cheese burgers.	\$ 5.00
Bakery pies.	\$ 6.50
Smaller pies.	\$ 5.50
Sausage rolls.	\$ 3.20
Garlic Bread.	\$ 4.00
Scones/Muffin	\$ 3.50
Slice Cake.	\$ 3.40 ea
Slices.	\$ 3.20 ea
Hot chips	\$ 4.00
Sandwiches.	From \$3.50
Rolls.	\$ 5.00
Wraps.	\$ 5.50
Chicken n chips.	\$ 6.00
Chicken on chips.	\$ 7.00
Chicken on Rice.	\$ 5.50
2 piece Chicken n chips.	\$ 9.00
Tenders n chips.	\$ 6.00
Hot dog n chips.	\$ 5.50
Noodles.	\$ 3.50
Trumpets.	\$3.50
Magnum, Ben n Jerry	\$ 4.00
Iceblock.	\$ 1.00
Lolly bags.	\$ 1/ \$ 2.00

### DRINKS

Water.	Sml \$ 3.00/ Lrg \$ 4.00
Cans.	\$ 2.50
E2.	\$ 4.50
Mogu Mogu	\$ 2.60

## TEACHER AIDE POSITION AVAILABLE



*Are you passionate about making a difference in a young person's life?*

Naenae College is seeking an enthusiastic and caring Teacher Aide to provide learning support to a Year 9 student. We need someone reliable to support the student's learning and engagement in the classroom.

This will be for a fixed term (21 weeks), 20 hours per week, term time only for Term 2 and Term 3, 2026

Please email [admin@naenae-college.school.nz](mailto:admin@naenae-college.school.nz) with expressions of interest and your CV.

NAENAE COLLEGE 

## HOMESCHOOL CLUB



**VENUE**  
THE LIBRARY



**TIME**  
3.15PM - 4.30PM



**WHEN**  
EVERY TUESDAY  
AND THURSDAY  
IN TERM 2 AND TERM 3



**TEA AND  
LIGHT SNACKS  
PROVIDED**

**COME ALONG FOR A QUIET SPACE TO:**

-  **COMPLETE YOUR ASSESSMENT** 
-  **STUDY AND REVISE** 
-  **CATCH UP ON MISSED LESSONS** 

**PLEASE NOTE - THIS IS FOR THOSE STUDENTS WHO NEED THE QUIET SPACE FOR STUDIES. NO GAMES OR CHILLING PLEASE**

## SchoolBridge App

Please download the SchoolBridge App to receive the latest news and communications from the College, register for sport and other extra curricular activities, advise us of absences, and book learning conferences.



**Naenae College**

**Download Our App**

Scan the QR Code to download. Or  
Search "**schoolbridge**" on your mobile AppStore or PlayStore.

Download on the **App Store** GET IT ON **Google Play**

Once you have downloaded the app, you can sign in using your school account information. Please contact the school if you need help with your account details.

### From Accounts:

For any school payments required during the year.

Payment options:

A. Eftpos/Cash - can be paid directly at Reception

B. Automatic/Online payment - Naenae College Board of Trustees Account number 02-0540-0044653-00

Please remember to put your child's name in the reference. You can make your payment in one lump sum or spread your payments by term, monthly or fortnightly with automatic payments.

Fundraising options are available to help pay your fees if required. Please see our accounts office for more information.

## Term dates - 2026

Term 1 – Monday 2 February to Friday 2 April

Term 2 – Monday 20 April to Friday 3 July

Term 3 – Monday 20 July to Friday 25 September

Term 4 – Monday 12 October to Monday 14 December

### Public holidays 2026

6 February – Waitangi Day

3 April – Good Friday

6 April – Easter Monday

25 April – ANZAC Day (observed Monday 27 April)

1 June – King's birthday

10 July – Matariki

26 October – Labour Day

**If your child is away from school,  
please advise us via the  
SchoolBridge App (absences) or  
call Student Services on  
04 5677175 or 0800 662 655**